

# Ispirer Migration and Modernization Toolkit 2017

## ▶ Database Schema Migration

Converts tables, indexes, NULL, default values, primary and foreign keys, unique and check constraints, identity columns, synonyms, comments and other database objects and properties.

## ▶ Data Migration

Supports all data types including large objects (LOB) and uses high performance tools for data transfer.

## ▶ Server-Side Business Logic Migration

Converts stored procedures, functions, packages, triggers and views with database connection or without it (SQL scripts conversion).

## ▶ Database API Conversion

Supports conversions between ODBC, Oracle OCI, Oracle Pro\*C, Sybase CT/LIB and other interfaces.

## ▶ Embedded SQL Conversion

Migrates SQL statements written inline with a program source code.

## ▶ Application Conversion

Converts applications between various platforms and programming languages.



Up to 100% Migration Automation



Highly Customizable and Flexible



The Largest Number of Supported Source and Target Technologies



Flexible Pricing Strategy



Free High Quality Support

## Make your migration process up to 100% automated

Sounds impossible, but it's true! Take advantage of the customized tool!

In case you need to change some already existing conversion rules or want to add some new that are required for your project, it can be done via the **toolkit extension** in 1-3 business days.

## Migration with the connection to the database

- Works with the source database using **the ODBC connection**
- Saves **conversion results** in files
- Performs import of the results into target databases using **native tools**

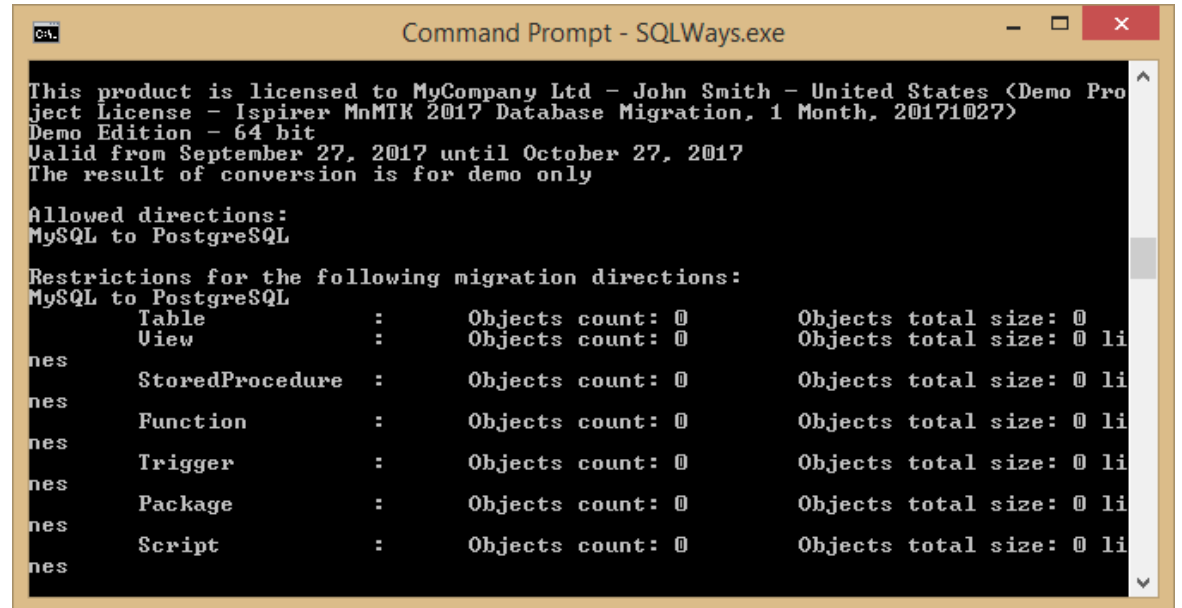
## Conversion of code files

- Converts files which contain **SQL scripts, program code, UI, reports** and supports **project files**

Ispirer MnMTK  
2017  
Structure

- ✓ Migration and Modernization Engine
- ✓ SQLWays Wizard
- ✓ NGLFly Wizard
- ✓ Migration Studio
- ✓ Migration Commander

Ispirer Migration and Modernization Engine is a command line tool (sqlways.exe file) that can be run in batch mode and can perform the automatic conversion of a database or application.



```
Command Prompt - SQLWays.exe

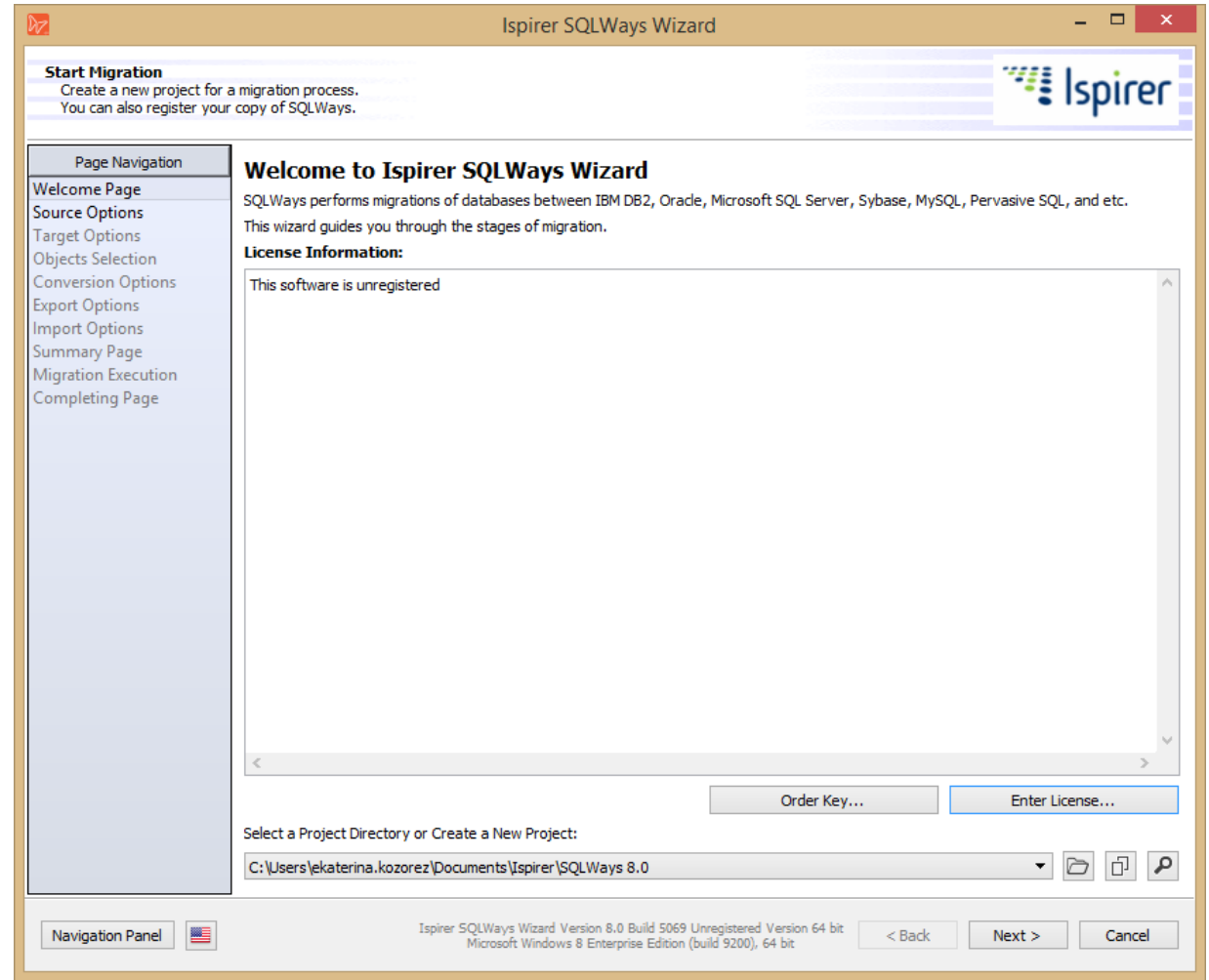
This product is licensed to MyCompany Ltd - John Smith - United States <Demo Pro
ject License - Ispirer MnMTK 2017 Database Migration, 1 Month, 20171027>
Demo Edition - 64 bit
Valid from September 27, 2017 until October 27, 2017
The result of conversion is for demo only

Allowed directions:
MySQL to PostgreSQL

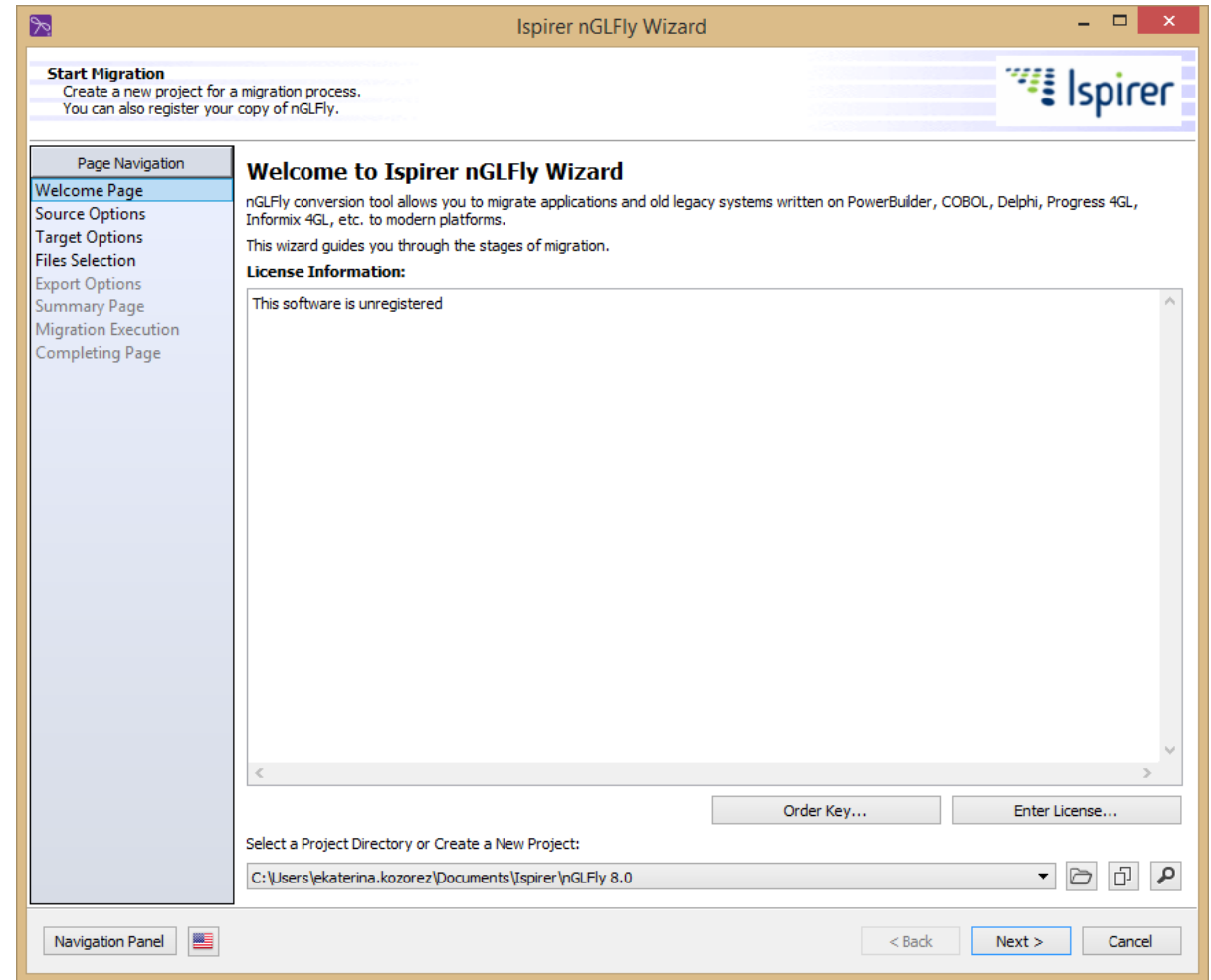
Restrictions for the following migration directions:
MySQL to PostgreSQL
Table           :      Objects count: 0      Objects total size: 0
View            :      Objects count: 0      Objects total size: 0 li
nes
StoredProcedure :      Objects count: 0      Objects total size: 0 li
nes
Function        :      Objects count: 0      Objects total size: 0 li
nes
Trigger         :      Objects count: 0      Objects total size: 0 li
nes
Package         :      Objects count: 0      Objects total size: 0 li
nes
Script          :      Objects count: 0      Objects total size: 0 li
nes
```



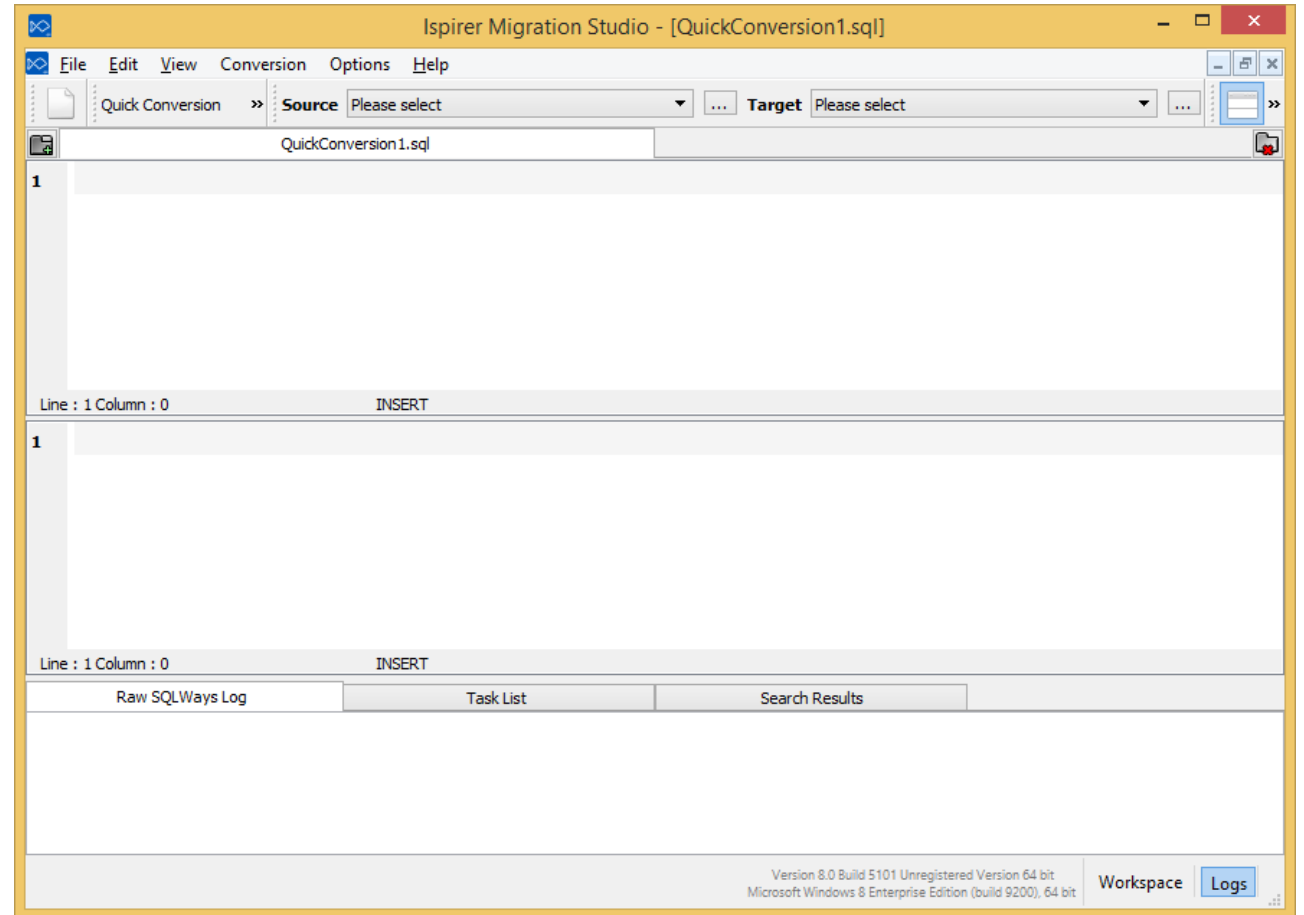
Ispirer SQLWays Wizard is a GUI tool that was designed to simplify the tuning of a database conversion process. Works with the source database using the ODBC connection.



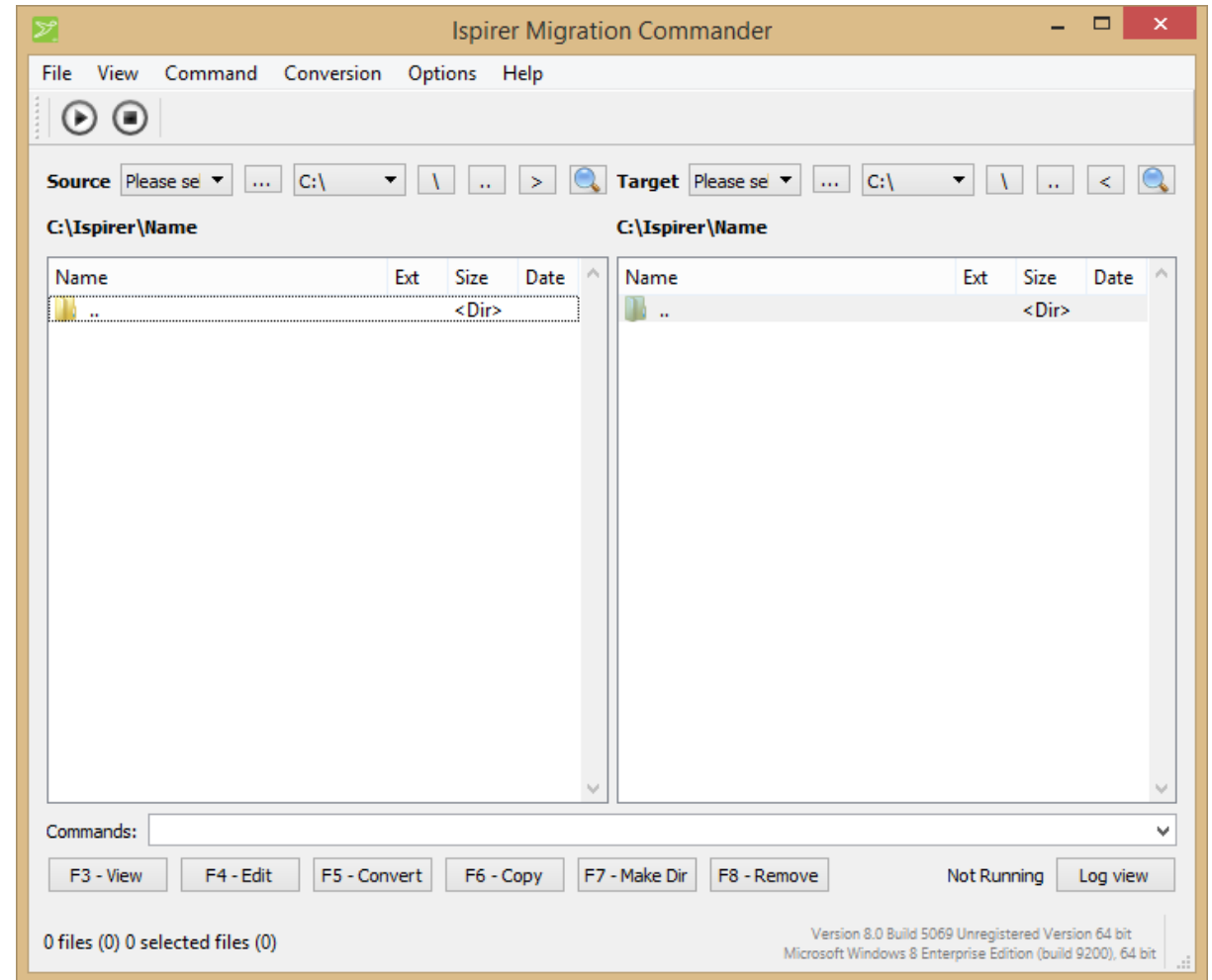
Ispirer nGLFly Wizard is a GUI tool that was designed to simplify the tuning of an application conversion process.



Ispirer Migration Studio is a GUI tool that was designed to simplify the conversion of a database or application script. Works with one script at a time.



Ispirer Migration Commander is a GUI tool that was designed to simplify the conversion of database or application scripts. Works with several scripts at a time.



**Contact us**, if you have any business inquiries or questions regarding your migration project.

[www.ispirer.com/contacts](http://www.ispirer.com/contacts)

